



STATEMENT OF QUALIFICATIONS & COMPANY PORTFOLIO



www.cmcprojectsolutions.com

Table of Contents

Our Company Overview	1
Why Choose CMC?	3
Core Expertise.....	4
Our Services.....	8
Industry Experience.....	13
Our Team.....	15
Featured Projects.....	19
Work Product Examples.....	23
Safety is Our Priority.....	29
Leveraging Technology for Efficiency and Insight.....	30
Our Collaborative & Results-Oriented Approach.....	33
Professional Affiliations and Thought Leadership.....	34
Appendix.....	35



Our Company Overview

Your Trusted Partner for Strategic Project Controls

Our Mission & Vision

CMC Project Solutions is a leading WBE-certified and DBE-certified engineering and construction consulting firm specializing in project management, staffing augmentation, and PMO support.


With our deep industry knowledge and proven track record, we deliver exceptional results for clients across various sectors. Our team of experienced professionals provides tailored solutions that not only drive business forward but also enhance work-life balance. By optimizing project processes and maximizing efficiency, we help our clients achieve their goals while minimizing stress and burnout.

First and foremost, integrity guides every decision and action. We believe in being completely straightforward, honest, and accountable in all that we do. Building relationships on a foundation of trust isn't just important, it's essential, driving us to maintain transparency in our recommendations and partnerships.

We are committed to functioning as true partners with our clients. This means more than just providing services; we strive to integrate seamlessly, embedding ourselves within your team to fully understand and align with your project goals. Your objectives genuinely drive our collaborative efforts toward shared success.

Delivering excellence in project controls is our professional standard. We apply rigorous analysis, deep industry expertise, and meticulous attention to detail to provide reliable insights and support predictable outcomes. Our dedication is to ensure the highest quality of support contributes directly to your project's success.

Finally, we believe strongly in practical, effective solutions. Our focus is always on strategies and recommendations that are clear, efficient, and proven to work in the real world. We aim to deliver support that makes a tangible, measurable difference to your project's budget, schedule, and overall performance.

The background of the page is a photograph of a construction site at sunset or sunrise. The sky is filled with soft, orange and yellow clouds. In the foreground, the silhouettes of several construction workers wearing hard hats are visible as they work on a structure. Scaffolding and rebar are also visible in the scene.

Founded in February 2020 by Chrissy Costantino, CMC Project Solutions, Inc. emerged from a clear vision: to foster greater representation of women in the project controls workspace and to provide a more unified and effective approach to project delivery. Recognizing a need for innovation and a commitment to excellence, Mrs. Costantino established CMC Project Solutions on the bedrock of industry best practices, drawing upon the recommended guidelines of esteemed organizations such as AACE International and other leading professional bodies.

As CMC Project Solutions has grown, its core principles have remained steadfast. Mrs. Costantino's leadership has championed not only diversity in the workplace but also the creation of an inclusive environment where all individuals are valued and empowered. Her commitment to leading by example has cultivated a culture of mutual respect and admiration within the team.

At the heart of CMC Project Solutions lies a fundamental belief in prioritizing quality over quantity and fostering transparency in all interactions. This ethos guides our approach to client engagements and internal operations, ensuring that trust and integrity are the cornerstones of every relationship and every project we undertake. Our history, though recent, is rooted in a deep commitment to providing exceptional project controls solutions driven by expertise, ethical practices, and a genuine dedication to our clients' success.

Why Choose CMC?

At CMC Project Solutions, Inc., we understand that successful project controls go beyond simply tracking progress. We differentiate ourselves by offering a suite of qualities that ensure our clients achieve their project goals with confidence and efficiency:

- **Proactive Approach:** We don't just react to challenges; we anticipate them. Our experienced team employs a forward-thinking methodology, identifying potential risks and opportunities early in the project lifecycle. By implementing proactive strategies for planning, monitoring, and control, we help our clients mitigate issues before they impact schedules and budgets, ensuring smoother project execution and minimizing costly surprises.
- **Practical & Actionable Solutions:** We believe in delivering solutions that are not only theoretically sound but also highly practical and readily implementable. Our recommendations are grounded in real-world experience and tailored to the specific context of each project. We focus on providing clear, concise, and actionable insights that empower our clients to make informed decisions and take effective steps to optimize project performance.
- **Tailored Services, Your Unique Needs:** We recognize that every project is unique. Our approach is never one-size-fits-all. We take the time to thoroughly understand our clients' specific objectives, organizational structures, and project requirements. This deep understanding allows us to develop and deliver truly tailored services that precisely address their individual needs, ensuring maximum value and a partnership built on collaboration and alignment.
- **Experienced & Certified Team:** Our greatest asset is our team of seasoned professionals, led by industry experts with decades of collective experience in project controls. Our certifications (PSP, CCE, CRA, Primavera) and deep understanding of best practices (AACEI, PMI) ensure that our clients benefit from the highest level of expertise and knowledge. We bring a wealth of practical experience from diverse industries, allowing us to provide insightful perspectives and effective solutions to even the most complex project challenges.

Choosing CMC Project Solutions, Inc. means partnering with a team dedicated to proactive engagement, delivering practical and tailored solutions, and bringing a wealth of experience to ensure the successful outcome of your critical projects.



Core Expertise

Advanced Project Scheduling and Analysis (CPM)	Baseline Schedule Development & Logic Validation	Progress Monitoring, Updates & Reporting	Critical Path & Float Management
Resource & Cost Loading Analysis	Schedule Optimization & 'What-If' Scenarios	Comprehensive Cost Management	Estimating Support & Budget Development
Cost Control, Forecasting & Earned Value Management (EVM)	Variance Analysis & Corrective Action Planning	Cash Flow Projections & Funding Analysis	Proactive Risk Management and Mitigation
Risk Identification & Assessment (Qualitative/Quantitative)	Mitigation & Contingency Strategy Development	Risk Workshops, Registers & Monitoring	Strategic Contract Administration and Management
Contract Document Review & Management	Change Order Management, Negotiation & Control	Compliance Monitoring & Reporting	Claims Avoidance & Management Support
Expertise in Delay Claims and Forensic Schedule Analysis	Delay Analysis Methodologies (Time Impact Analysis (TIA), Windows, etc.)	Forensic Investigation & Causation Analysis	Damages Quantification Support
Expert Reporting for Dispute Resolution	Efficient Document Control and Management	System Implementation & Process Optimization	Controlled Information Flow & Collaboration Platforms
Audit Trails & Project Record Integrity	Strategic Business Intelligence (BI) Reporting Development	Data Integration from Diverse Project Sources	Custom Power BI Dashboard Creation & Visualization
	Key Performance Indicator (KPI) Definition & Tracking	Enabling Data-Driven Decision Making	

Our Expertise

Turning Complexity Into Control. Delivering Clarity at Every Project Stage.

At CMC Project Solutions, Inc. we deliver more than just project support. We provide the frameworks, tools, and intelligence needed to help capital programs succeed in the real world.

Our team operates at the convergence of project controls, strategic advisory, and digital transformation. Whether navigating a transmission program, upgrading a utility network, or launching a large-scale infrastructure initiative, we help owners and partners move with speed, certainty, and insight.

Strategic Project Scheduling

We don't just build schedules. We engineer time.

Timelines are more than lines on a chart; they are the operational backbone of your project. At CMC Project Solutions, Inc. we bring structure and foresight to your scheduling process, building performance-driven schedules that reflect field realities and executive expectations.

Our approach helps you:

- Define and validate scope with clear, logic-based baselines
- Monitor progress with traceable updates and leadership-ready reporting
- Maintain schedule integrity through resource and cost loading
- Prepare for uncertainty with scenario modeling and float analysis

We believe the best way to deliver on time is to understand time differently.

Cost and Performance Management

When you can see it, you can control it.

Budget control is more than tracking numbers. It means managing expectations, identifying trends, and seeing change before it shows up in a forecast. Our cost team brings financial discipline and transparency to every phase of the project.

*Trusted by utilities, EPCs, and
public sector clients*



50+ years
combined
leadership
experience

We support:

- Budget development rooted in scope and schedule logic
- Real-time forecasting and performance dashboards
- Earned value management to track progress against investment
- Funding strategy analysis to align capital with cadence

We bridge the gap between accounting and execution so decisions are made with confidence.

Risk and Issue Management

We manage risk like it's part of the plan. Because it is.

We embed risk management into every layer of a project. From preconstruction through commissioning, our team facilitates risk identification, quantification, and mitigation using best practices aligned with schedule and cost systems.

Our services include:

- Qualitative and quantitative risk assessments
- Contingency planning and scenario simulations
- Risk register development and maintenance
- Integrated reporting across disciplines

Resilience is not reactive. It's proactive by design.

Claims, Delay, and Forensic Analysis

When projects go sideways, we help you move forward.

Disputes, delays, and claims are complex. We deliver forensic analysis that is defensible, data-driven, and actionable. Whether supporting claims preparation, response, or negotiation, our insights are grounded in proven methodologies.

What we deliver:

- Schedule delay and causation analysis using industry-accepted methods
- Time impact assessments and as-built validations
- Damages quantification and cost correlation
- Expert documentation and reporting for claims and disputes

We combine clarity and credibility when it matters most.

Document Control and Collaboration

Every decision leaves a trail. We help you follow it.

Documentation is the connective tissue of a project. We design systems that make communication seamless, ensure compliance, and maintain project integrity from start to finish.

Key strengths:

- Deployment of collaboration platforms and control systems
- Workflow design and process optimization
- Audit-ready naming standards and permissions
- Integration with PMIS tools like Unifier

Information should move efficiently without sacrificing accountability.

Business Intelligence and Dashboards

Data is only useful when it's usable.

We build Power BI dashboards that transform data into decisions. Our reporting tools offer real-time visibility across performance metrics, enabling teams to act quickly and lead confidently.

We design:

- Dashboards tailored to KPIs, workflows, and user roles
- Visual reporting for schedule, cost, and risk metrics
- System integrations across P6, Unifier, Excel, and financial platforms
- Executive summaries with drill-down functionality

We don't just present data. We make it meaningful.

ORACLE
Partner

*Oracle Gold
Partner with deep
P6 and Unifier
expertise*



Why Clients Choose CMC

By leveraging its expertise in project scheduling, construction management, and transportation and logistics, CMC Project Solutions successfully delivered these projects, demonstrating its commitment to high-quality, efficient, and safe projects across industries.

- We are technical and tactical, delivering precision with agility
- We speak the language of owners, engineers, and field teams
- We bring clarity to every schedule, dashboard, and deliverable
- We add value without overhead—nimble, embedded, and focused
- We show up as a partner who is accountable and invested in outcomes

Some of our Clients



What Clients are saying:

CMC Project Solutions, Inc. has consistently provided us with the insightful data and robust scheduling expertise necessary to effectively manage our complex project portfolio. Their team's commitment to understanding our specific needs and delivering practical, results-oriented solutions has made them a valuable asset to our strategic initiatives."

Mark Olsen, Director of PMO, Private Utility

We consider CMC Project Solutions, Inc. a valuable partner. Their expertise and commitment to our project controls needs have been crucial to the successful delivery of our initiatives."

Robert Miller, Vice President of Operations, Industrial Consulting

Our Services

Meeting the Demands of Complex Projects

At CMC Project Solutions, Inc. our services are designed to meet clients where they are and take them further. Whether you are launching a new capital program, upgrading systems and workflows, or addressing schedule and cost performance mid-project, we bring strategic insight, technical expertise, and a hands-on approach that ensures your success.

Project Controls Consulting and Advisory Services

We advise owners, developers, and construction managers on how to structure and scale their project controls systems. Our consulting approach focuses on aligning people, process, and technology to drive consistency, accountability, and performance across all phases of the project lifecycle.

We help clients:

- Assess and improve project controls maturity
- Standardize scheduling, cost, and risk procedures across programs
- Develop internal reporting frameworks and governance models
- Create integrated workflows that tie planning to execution

Oracle Primavera P6 EPPM & Unifier Implementation, Configuration, & Support

As a trusted Oracle Partner, CMC Project Solutions, Inc. provides complete implementation and lifecycle support for Primavera P6 and Unifier. We help organizations deploy, configure, and maintain systems that enable smarter planning, real-time cost control, and greater transparency across portfolios.

Our services include:

- System setup, configuration, and user onboarding
- Workflow and form customization to match business processes
- Ongoing system administration and user support
- Integration with scheduling, ERP, and reporting systems

Comprehensive Project Scheduling Services

Accurate scheduling is the foundation of predictable project delivery. Our expert schedulers develop and manage fully logic-driven, resource-loaded schedules across all project phases, from preconstruction through commissioning.

We provide:

- Baseline development aligned with contract requirements
- Progress updates, analysis, and earned value integration
- Recovery schedules and what-if scenarios
- Support for time-related claims and project audits

Whether you need a short-term update or full lifecycle scheduling support, we deliver schedules that hold up under scrutiny and help keep projects on track.

Cost Estimating, Forecasting, and Earned Value Management

Our cost control specialists bring clarity and precision to financial performance management. We support both owners and contractors with the tools and insights needed to monitor costs, manage change, and stay ahead of budget issues.

We offer:

- Budget development based on scope and historical data
- Forecasting and trending analysis
- Earned value metrics tied to progress and performance
- Variance reporting and funding strategy alignment

Our integrated approach connects cost and schedule data to give teams a more complete picture of project health.

Performance Measurement and Custom Reporting

We help teams move from data overload to actionable insight. Our reporting solutions consolidate data from scheduling tools, cost systems, and field operations into tailored dashboards that support both day-to-day decision-making and executive oversight.

Our reporting services include:

- Dashboard development using Power BI and other platforms
- Custom KPI definition and benchmarking
- Data integration from Unifier, P6, Excel, and ERP systems
- Role-specific visualizations for field, finance, and leadership

Our goal is to ensure your team is not just informed, but empowered.

Contractor Schedule Reviews and Oversight

We provide independent review and oversight of contractor-developed schedules to help owners and program managers validate timeline logic, identify risks, and ensure compliance with contractual requirements.

This includes:

- Constructability reviews of baseline and updated schedules
- Critical path and float validation
- Monthly oversight of schedule progress and performance
- Assessment of delay potential and mitigation options

This service supports better planning, reduces disputes, and promotes transparency between stakeholders.

Change Order Management and Control

CMC Project Solutions, Inc. supports clients with structured change management processes that reduce administrative friction and improve financial control. We help assess change order impact on schedule and cost and maintain consistent documentation throughout the process.

Services include:

- Change tracking and register management
- Time and cost impact evaluation
- Support for negotiation and approval workflows
- Integration with scheduling and cost systems

With clearer control over changes, clients gain confidence in project scope and performance.

Risk Management Facilitation and Analysis

We guide clients through structured risk management processes that surface the most critical threats to project success and provide a roadmap for mitigating them.

Our capabilities include:

- Facilitation of qualitative and quantitative risk assessments
- Development of risk registers and contingency strategies
- Schedule and cost impact modeling
- Ongoing risk monitoring and reporting

By embedding risk into your project systems, we help ensure your teams are prepared, not surprised.

Delay Claims Analysis and Forensic Scheduling

When delays occur, we provide the technical expertise and analytical rigor to determine what happened, why, and what it means for cost and schedule impact.

We offer:

- Delay analysis using industry-accepted methodologies
- Root cause and responsibility determination
- Time impact assessments and scenario modeling
- Expert-level documentation and reporting

Whether supporting claims preparation or defense, we ensure clarity and credibility throughout the process.



Staff Augmentation with Skilled Project Controls Professionals

When you need hands-on support, we provide seasoned professionals who integrate with your team and deliver from day one. Our staff includes schedulers, cost engineers, risk analysts, Unifier administrators, and document control leads.

Each professional is vetted for technical skill and industry experience and supported by our senior advisory team to ensure quality and continuity.

Document Control System Setup and Management

We help organizations implement and manage document control systems that enable smooth collaboration, reduce rework, and ensure regulatory compliance.

Our services include:

- Platform selection and setup
- Process mapping and workflow design
- User training and support
- Ongoing management of document access, versioning, and audit readiness

A well-structured document system is the key to accountability and efficiency across your project lifecycle.

Industry Experience

Energy and Utilities

Tehachapi Renewable Transmission Project 4-11, Tehachapi, CA
Los Coches Substation Rebuild, Santee CA '
Miguel 500kV Synchronous Condenser Project, Sunnyside CA
SDG&E Telecom (SPACE) Projects, San Diego CA
SDG&E Substation Engineering Portfolio Management, San Diego, CA

Power Generation

Cerulean Solar Project, Richmond VA
Moon Corner Solar Project, Richmond VA
Justice Battery Energy Storage Project, Pheonix AZ
VRF Energy Storage Project – San Diego, CA
Southern Virginia Solar Project, Pittsylvania County VA
B&K Solar Project, North Hartsville, SC
Blue Ridge Solar Project, Virginia
Crimson Battery Energy Storage Project, Blythe CA

Specific Challenges & Solutions in the Energy Sector

ESRI / Primavera / Power BI Integration – DTE, Detroit MI
PG&E Vegetation Management PMO – Oakland, CA
County of San Bernardino – County-wide Primavera Implementation
City of Bentonville – City Wide Primavera Implementation

Infrastructure and Municipality

Waste Management Composting Facility, Oakland CA





Highways & Bridges

91/71 Freeway Interchange, Corona CA
Fullerton Road Grade Separation Project, Fullerton CA
Hamner Avenue Bridge & Widening Project, Ontario CA
I-15 / French Valley Parkway Improvements Project, Temecula CA
Limonite Avenue Gap Closure Project, Eastvale CA
Moreno Beach Drive Bridge – Moreno Valley, CA
McKinley Road Grade Separation Project, Corona CA
Route 91 Corridor Operations Project, Corona CA
Skyview Road Pedestrian Bridge Project, Temecula CA

Water & Wastewater Facilities

Valencia Water Reclamation Plant, Santa Clarita CA
F.E. Weymouth Water Treatment Plant, La Verne CA
Joseph Jensen Water Treatment Plant, Granada Hills CA
Robert B. Diemer Water Treatment Plant, Yorba Linda CA
Robert A. Skinner Water Treatment Plant, Winchester CA
San Jacinto Valley Regional Water Reclamation Facility, San Jacinto CA

Commercial and Residential Development

Kilroy Oyster Point Redevelopment, South San Francisco CA
Drew Las Vegas Hotel, Las Vegas NV
The Century Luxury Condominiums, Century City CA
Seattle VA Hospital Expansion Project, Seattle WA
Elite Body Sculpture Buildout Project, Orange CA
RYE Alternate Gas Control Center, Long Island NY
Brea Shopping Mall Improvements Projects, Brea CA

Theme Parks and Entertainment

Disney's Pirates of the Caribbean Ride Renovations, Anaheim CA
Downtown Disney Monorail Commissary Kitchen Project, Anaheim CA
Disney Vacation Lounge Project, Anaheim CA
Project Mochi (Big Hero 6) – California Adventure, Anaheim CA
Star Wars Trading Post Project, Anaheim CA

CHRISSY COSTANTINO

CHEIF EXECUTIVE OFFICER



+1-949-289-4490 | ChrissyC@cmcprojectsolutions.com

Highly accomplished Chief Executive Officer with a proven track record of driving exceptional organizational growth. Founded CMC Project Solutions, Inc. in February 2020 and has since led the company to successive years of doubled gross income. Began career at DRMcNatty in 2007, demonstrating consistent advancement and leadership potential. Adept at fostering a positive and productive work environment by prioritizing employee well-being and ensuring seamless inter-departmental functionality. Co-chair of the AACEi Arkansas Chapter, a member of the NWA PMI Institute, and a NAWIC Member. Oracle certified solutions specialist.

Our Team

KEY SKILLS

- Leadership & Management: Strategic Planning, Organizational Development, Financial Management, Operational Efficiency, Employee Engagement, Performance Management.
- Business Acumen: Business Development, Market Analysis, Growth Strategy
- Project Management: Project Planning, Execution, Risk Mitigation, Change Management.
- Software & Tools: Oracle Primavera Applications.

RELEVANT EXPERIENCE

- Chief Executive Officer: CMC Project Solutions, Inc. - Led the company to successive years of doubled gross income.
- DRMcNatty: Progressively advanced through leadership roles, culminating in a position of significant influence within the organization.

CERTIFICATIONS

Certified Oracle Solutions Specialist

AFFILIATIONS

Co-chair, AACEi Arkansas Chapter
Member, NWA PMI Institute
Member, NAWIC

ERIC COSTANTINO

VICE PRESIDENT

+1-949-899-4813 | EricC@cmcprojectsolutions.com



Highly accomplished Project and Program Management executive with over 20 years of experience driving successful initiatives across the utilities, transportation, and construction sectors. Brings deep expertise in design management, cost estimating, scheduling, contract administration, and risk analysis, ensuring every project is strategically planned and efficiently executed. Known for leading complex, multi-stakeholder programs from concept to completion, consistently delivering results on time, within budget, and aligned with organizational goals. A collaborative leader with a strong focus on team development, stakeholder engagement, and process improvement, committed to delivering high-impact outcomes in fast-paced, high-stakes environments.

CERTIFICATIONS

- Certified Oracle P6 Implementation Specialist
- Certified Primavera P6 Instructor (Basic & Advanced)
- Certified Oracle Primavera Unifier Specialist
- Certified Primavera Contract Management Instructor
- Certified AGC Construction Estimator

KEY SKILLS

- Project Management: Planning, execution, risk mitigation, change management, earned value management, contract negotiation, team leadership.
- Scheduling: Primavera P6 expert (implementation, administration, advanced techniques), critical path analysis, delay analysis.
- Cost Estimating: Conceptual, preliminary, and detailed estimates, quantity take-off, cost modeling, value engineering.
- Software: Primavera P6, ESRI, Oracle Unifier, MS Project, Excel, Word, PowerPoint, Synchro 5D, Hard Dollar, US Cost.

RELEVANT EXPERIENCE

- Program Director: PG&E - managed \$2.4B vegetation management portfolio.
- Senior Cost/Schedule Analyst: Provided scheduling, analysis, and delay claim support for DesignBuild and Design-Bid-Build projects.
- Senior Project Controls Consultant/Instructor:
 - o San Diego Gas & Electric - Managed schedules and change orders for substation projects.
 - o Minnesota DOT - Led Primavera P6 implementation for transportation projects.
 - o Southern California Edison: Led permit scheduling for a major transmission project.

AFFILIATIONS

Chairman, Arkansas AACEi Chapter
Previous VP, AACE Southern California Chapter

THOMAS WAGNER

CHIEF TECHNOLOGY OFFICER

+1 937-829-2586 | Twagner@cmcprojectsolutions.com



Highly adaptable IT executive with 20+ years of experience driving innovation, cybersecurity, and scalable technology solutions across diverse industries. Proven track record as a multi-time CTO, leading successful digital transformations, optimizing operational costs, and implementing complex technical architectures that support long-term growth. Brings deep expertise in IT strategy, enterprise system integration, and data-driven infrastructure, with a forward-thinking approach that leverages AI, machine learning, and advanced analytics to enhance decision-making and business performance. Recognized for building high-performing teams, aligning IT initiatives with business goals, and delivering sustainable, future-ready technology ecosystems.

CERTIFICATIONS

- Microsoft Azure Fundamentals (AZ-900)
- Microsoft Certified Professional
- CompTIA Security+
- CompTIA Network+
- CompTIA A+

EDUCATION

Bachelor of Science
in Management
Information Systems,
Wright State University

KEY SKILLS

- Cybersecurity & Cloud: Cybersecurity & Risk Management, Cloud Solutions & Digital Transformation. Strategic IT Leadership, Problem-Solving, Adaptability.
- Data & Analytics: BI Data Analytics & Management, Data Governance & Compliance.
- Project & Systems: Project Management (Agile & Scrum), Change Management, System Integration & Architecture.
- Infrastructure: Business Continuity Planning, Vendor Management.
- Technical Proficiencies: Microsoft Azure, VMware vSphere, Microsoft 365, Windows Server, Linux, Microsoft Teams, Microsoft SharePoint, CrowdStrike, Microsoft Sentinel, Proofpoint, NIST Cybersecurity Framework, ITSM, ITIL, SOC, PCI, Power BI, SSIS, SSRS, Microsoft SQL Server, Oracle, MySQL, Networking, Citrix, Microsoft Remote Desktop, Active Directory, Microsoft Intune, SCCM, WSUS, Microsoft CoPilot, ChatGPT, Rubrik, Server Hardware, WordPress, Freshdesk

RELEVANT EXPERIENCE

As CTO at CMC Project Solutions and NexusBlue, led Oracle P6/Unifier implementations, directed cybersecurity and analytics initiatives, conducted SCADA security assessments, developed CMMC plans, and expanded client bases through Power BI and system integrations.

At ND Paper, served as Director of Technical Services, reducing costs (up to 47%) via AI automation and vendor optimization, enhancing IT governance, BI strategy, and SQL performance, while strengthening data security and training.

Earlier, as Sr. Systems Administrator at DRMcNatty, streamlined IT support (34% faster resolutions), led Oracle platform upgrades, and managed VMware environments. At Lastar, modernized infrastructure and SAP systems, led HQ migration, and improved disaster recovery.

BILL OWCZARCAK

DIRECTOR BUSINESS DEVELOPMENT

+1 479-202-5001 | Bill@cmcprojectsolutions.com



Accomplished Senior Program Manager with over 20 years of experience leading complex, high-value programs across diverse sectors, including infrastructure, technology, and public works. Proven ability to drive strategic initiatives, optimize operations, and consistently deliver results within budget, scope, and schedule. Brings a strong track record of aligning programs with organizational goals, managing multimillion-dollar budgets, and navigating challenging project landscapes with precision. Expertise in cross-functional leadership, stakeholder engagement, risk management, and process improvement, with a focus on building collaborative teams and fostering a culture of accountability and continuous improvement. Adept at transforming vision into action, ensuring program success and long-term value creation.

CERTIFICATIONS

Project Management
Professional (PMP)

Agile Certified
Practitioner (ACP)

EDUCATION

MBA, University of
Arkansas

BS, Industrial
Engineering, University
of Oklahoma
Chapter

KEY SKILLS

- Project Management: Planning, execution, risk mitigation, change management, earned value management, contract negotiation, team leadership.
- Scheduling: Primavera P6 expert (implementation, administration, advanced techniques), critical path analysis, delay analysis.
- Cost Estimating: Conceptual, preliminary, and detailed estimates, quantity take-off, cost modeling, value engineering.
- Software: Primavera P6, ESRI, Oracle Unifier, MS Project, Excel, Word, PowerPoint, Synchro 5D, Hard Dollar, US Cost.

RELEVANT EXPERIENCE

- Senior Program Manager, Walmart (2016 – Present):
 - o Led multiple large-scale programs, including a \$1.5 billion initiative.
 - o Managed cross-functional teams of up to 200 members.
 - o Consistently delivered programs on time and under budget.
 - o Implemented process improvements that resulted in a 20% increase in efficiency.
- Program Manager, J.B. Hunt Transport (2010 – 2016):
 - o Managed the implementation of a new transportation management system.
 - o Reduced operational costs by 15% through process optimization.
 - o Successfully led a team of 10 project managers.
- Project Manager, Tyson Foods (2003 – 2010):
 - o Oversaw the construction of a new processing facility.
 - o Managed a budget of \$50 million and completed the project ahead of schedule.
 - o Developed and implemented project management methodologies.



Featured
Projects

CLIENT:



PROJECT DURATION:
March 14, 2022 –
June 30, 2022

DISNEYLAND'S PIRATES OF THE CARIBBEAN RENOVATION

On-Time & Within Budget Delivery



PROJECT OVERVIEW:

CMC's expert Project Management and Scheduling services were instrumental in the successful and timely completion of the highly sensitive and intricate renovation of Disneyland's iconic Pirates of the Caribbean ride. This high-speed, high-detail project was delivered on time and within the established budget.

CMC'S COMPREHENSIVE PROJECT MANAGEMENT & SCHEDULING:

Utilizing Primavera P6 for detailed master schedule development and management, our team meticulously oversaw this complex renovation encompassing the line queue, critical flume waterproofing, and extensive ride enhancements, including custom pirate theming, advanced lighting and projection systems, lift system upgrades, and Blue Bayou area improvements.

Our responsibilities included detailed task coordination, proactive resource optimization, rigorous progress monitoring and reporting, and critical path analysis to ensure efficient project execution. We also managed the seamless integration of numerous custom elements and implemented proactive risk management strategies alongside effective stakeholder communication throughout all project phases.

KEY ACHIEVEMENT:

The seamless execution of all three phases of the renovation ensured the timely reopening of this iconic attraction, demonstrating CMC's proven ability to manage complex, high-stakes projects under stringent deadlines and deliver results on time and within budget.

HAMNER AVENUE WIDENING & BRIDGE PROJECT

Critical Path Management for Complex Infrastructure

CLIENT:



PRIME CONSULTANT:
FALCON
ENGINEERING

CMC PROJECT
SOLUTIONS ROLE:
CPM SCHEDULING
SUBCONSULTANT

PROJECT DURATION:
AUGUST 2021 –
OCTOBER 2024



PROJECT OVERVIEW:

CMC Project Solutions provided expert Critical Path Method (CPM) scheduling services for the Hamner Avenue Widening and Bridge Project, a 1,200-foot, six-lane bridge construction over the sensitive Santa Ana River. Representing Falcon Engineering (Construction Management), our role was integral to the City of Ontario's oversight of the construction contractor and project delivery.

CORE SCHEDULING EXPERTISE:

Our responsibilities encompassed rigorous review and analysis of contractor schedules, comprehensive Time Impact Analysis (TIA) support, and strategic guidance for schedule acceptance/rejection. We actively participated in Claims and Dispute Resolution Board (DRB) meetings, providing critical scheduling insights. A key focus involved the development of detailed "what-if" schedule scenarios to proactively address challenges posed by the Santa Ana River diversion system and stringent environmental constraints concerning sensitive spawning fish. Our meticulous contractor schedule reviews were central to managing the project's critical path amidst these complexities.

KEY ACHIEVEMENT:

CMC Project Solutions' focused CPM scheduling expertise was crucial in navigating the intricate scheduling demands of this environmentally sensitive infrastructure project. Our proactive analysis and strategic schedule development directly supported informed decision-making, contributing to the successful completion of the Hamner Avenue Widening and Bridge by Fall 2024.

CRIMSON SOLAR & ENERGY STORAGE PROJECTS

Strategic CPM Scheduling for Utility-Scale Renewables

CLIENT:

**RECURRENT
ENERGY**
A subsidiary of Canadian Solar

PROJECT DURATION:
OPERATIONAL

CMC PROJECT
SOLUTIONS ROLE:
CPM SCHEDULING
FIRM



PROJECT OVERVIEW:

CMC Project Solutions provided expert Critical Path Method (CPM) scheduling services for the landmark Crimson Solar (350 MW) and Crimson Energy Storage (350 MW, 1,400 MWh) projects in Riverside County, California. This combined utility-scale solar photovoltaic and battery energy storage system (BESS), including Crimson I (200 MW, 800 MWh) and Crimson II (150 MW, 600 MWh) phases, stands as the second largest operating energy storage project globally, significantly enhancing grid reliability and supporting California's clean energy objectives.

CORE SCHEDULING EXPERTISE:

Our team was responsible for the comprehensive development and management of the project schedules, ensuring seamless integration between the solar and energy storage components. This included meticulous baseline schedule creation, proactive progress monitoring, detailed delay analysis, and the development of mitigation strategies to maintain project timelines. Our expertise facilitated the coordination of diverse stakeholders and subcontractors involved in the construction of this complex, large-scale renewable energy infrastructure.

KEY ACHIEVEMENT:

CMC Project Solutions' strategic CPM scheduling expertise was instrumental in the efficient and timely execution of the Crimson Solar and Energy Storage Projects. Our proactive schedule management directly contributed to the successful operationalization of this globally significant renewable energy facility, which powers over 47,000 homes and offsets substantial carbon emissions, demonstrating our capability in managing complex, utility-scale energy projects.

GEOSPATIAL PROJECT STATUS INTEGRATION

ESRI/ArcGIS, Power BI, Primavera P6 & Unifier

CLIENT:



PROJECT DURATION:
2022 – 2023

CMC PROJECT
SOLUTIONS ROLE:
INTEGRATION & CPM
SCHEDULING FIRM



PROJECT OVERVIEW:

CMC Project Solutions provided specialized technical integration services for DTE (Detroit Energy), revolutionizing their distribution gas mapping system. We designed and implemented a sophisticated solution seamlessly integrating ESRI/ArcGIS geospatial data with Primavera P6 and Unifier project management platforms through Power BI. This innovative integration provided DTE with a dynamic, visually intuitive representation of their gas line project statuses, directly driven by real-time schedule data.

TECHNICAL INTEGRATION EXPERTISE:

Our team architected and deployed a robust integration framework that enabled the geospatial visualization of gas line status within DTE's service areas. Leveraging the capabilities of ESRI/ArcGIS, Power BI, Primavera P6, and Unifier, we established automated data flows that dynamically updated the color-coded status of gas lines on a map based on predefined schedule milestones. This included:

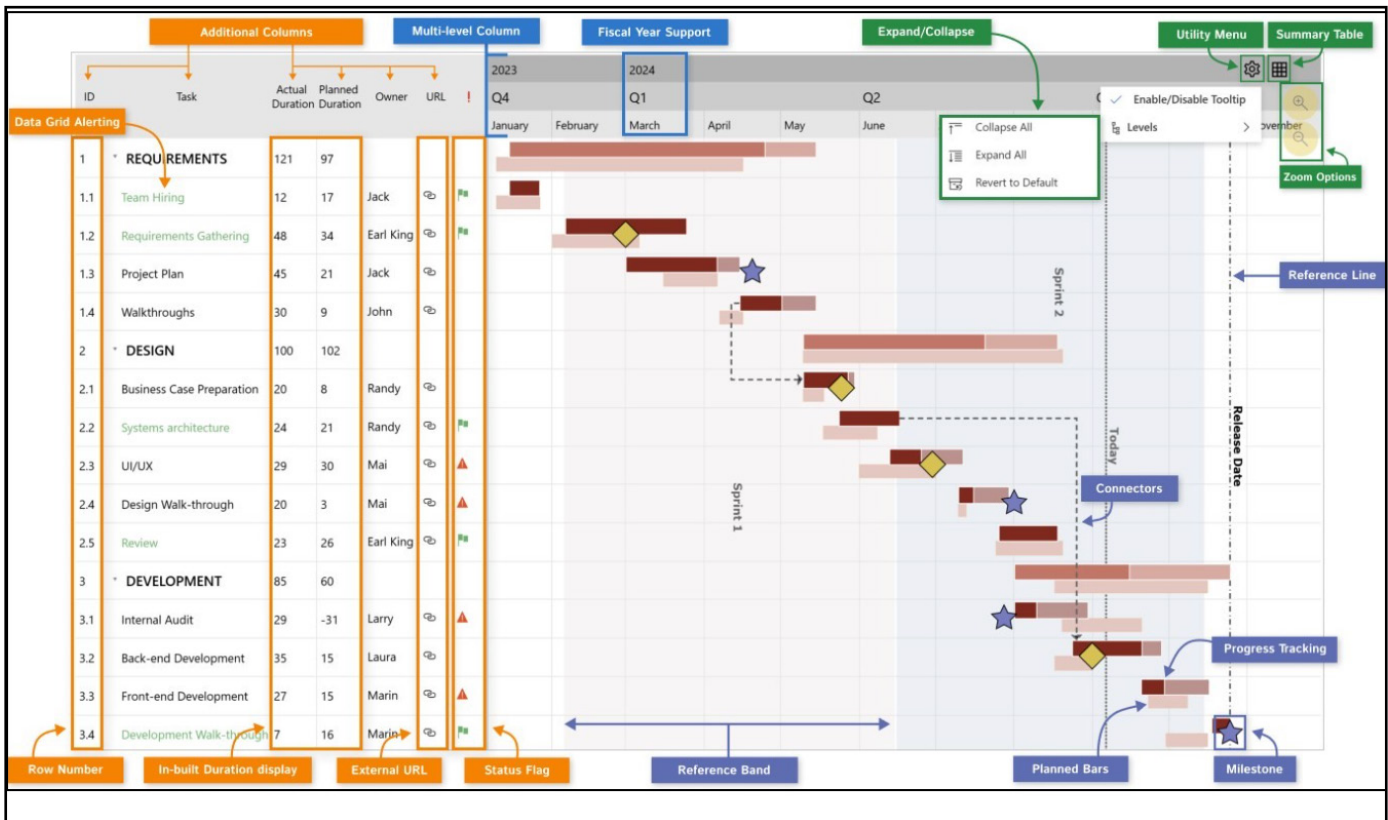
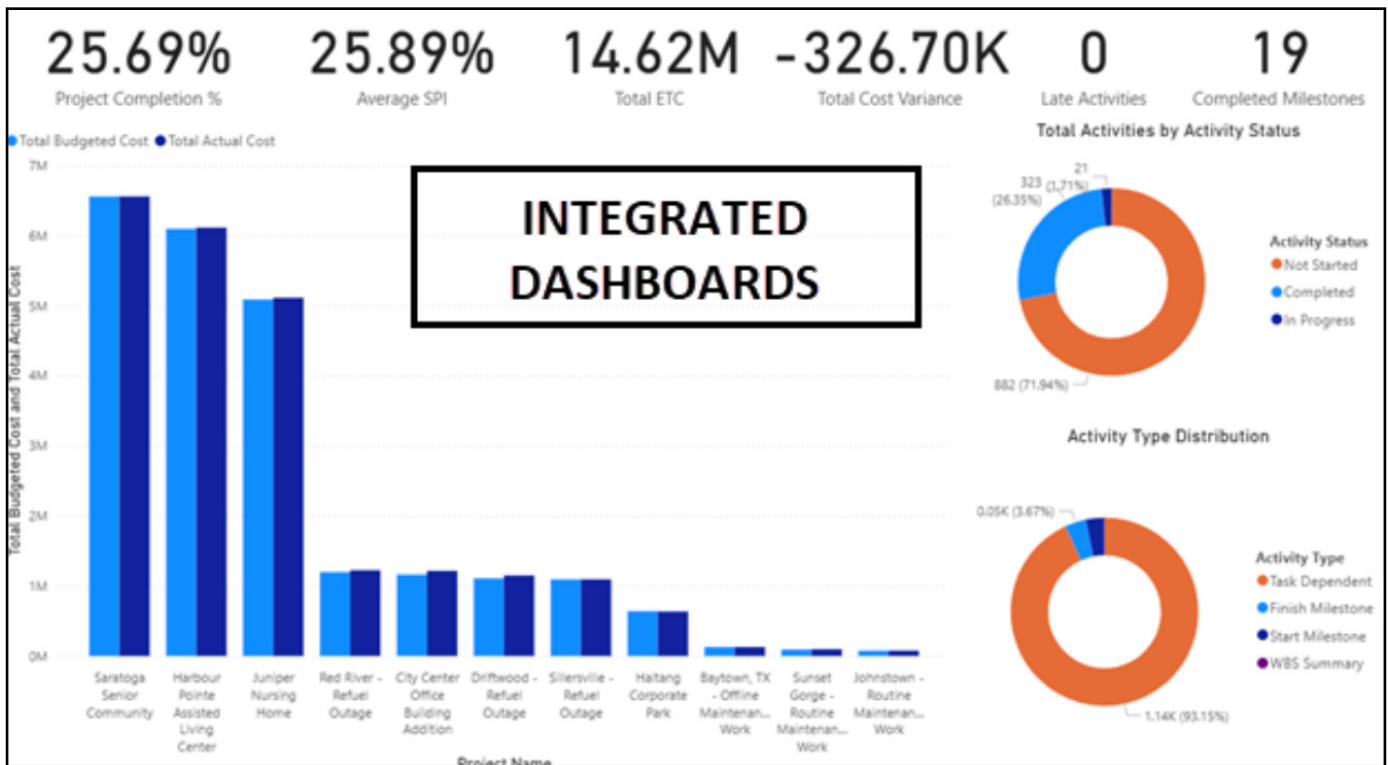
- **ESRI/ArcGIS Data Integration:** Establishing connectivity to DTE's geospatial data layers for gas line infrastructure.
- **Primavera P6 & Unifier Data Extraction:** Developing processes to extract relevant project status and schedule data from DTE's project management systems.
- **Power BI Visualization Development:** Creating interactive dashboards within Power BI that linked the geospatial data with the extracted schedule information.
- **Dynamic Color-Coding Logic:** Implementing rules within Power BI to automatically change the color of gas lines on the map based on real-time project status updates (e.g., "In Service," "Under Construction").
- **Public-Facing Interface Design:** Assisting in the development of a user-friendly, public-facing interface with a clear legend, enhancing customer satisfaction through transparent project status updates.

KEY ACHIEVEMENT:

CMC Project Solutions' unique technical expertise in integrating ESRI/ArcGIS with Primavera P6 and Unifier via Power BI delivered a powerful, data-driven visualization solution for DTE (Detroit Energy). This innovative approach provided real-time, geospatial insights into their gas distribution project statuses, significantly improving internal monitoring capabilities and enhancing customer communication through a transparent, public-facing interface.

Work Product Examples

Business Intelligence Dashboards



Sample Project Reports (Cost, Schedule, Risk, EVM - Anonymized)

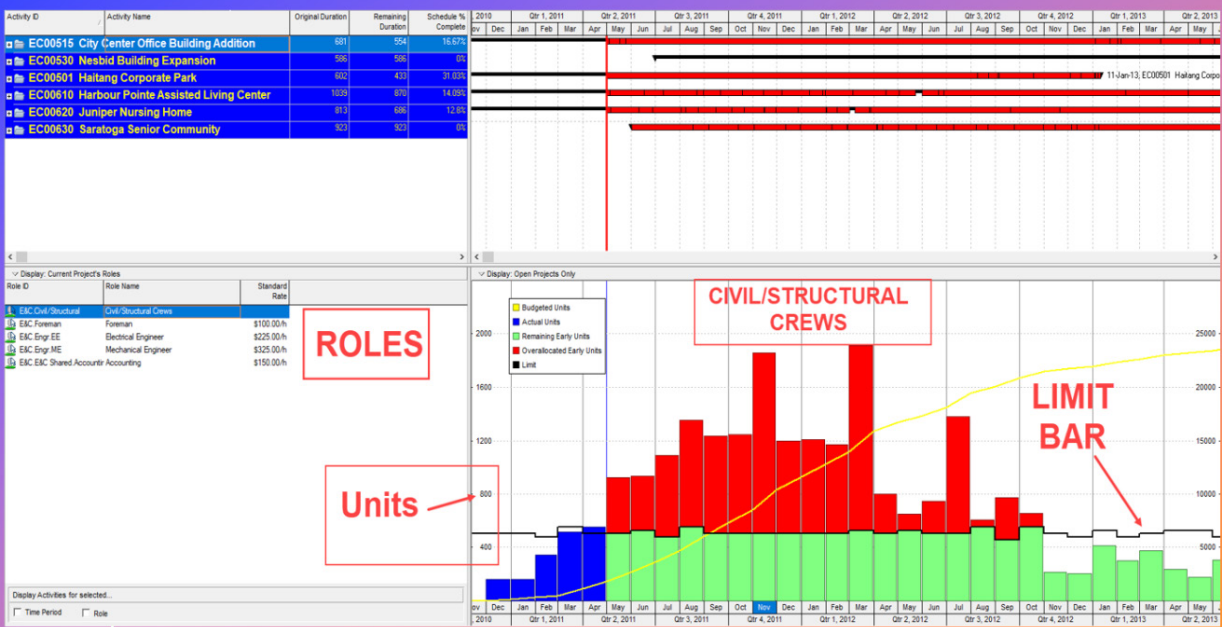
Project ID	Project Name	Project Status	Budgeted Cost	Actual Total Cost	At Completion Total Cost	At Completion Duration	Start	Finish	2025											
									Aug	Sep	Oct	Nov	Dec	Jan	Feb	Mar	Apr	May	Jun	Jul
CITY	CITY OF AMERICA	Active	\$48,632,898.61	\$8,329,844.32	\$67,768,823.75	4077d	01-Jul-10 A	17-Mar-26												
SB E&C	ENGINEERING & CONSTRUCTION	Active	\$17,011,002.91	\$2,353,539.52	\$23,025,582.97	4056d	02-Aug-10 A	17-Mar-26												
Transportation	TRANSPORTATION ROAD PROJECTS	Active	\$2,837,661.01	\$816,557.05	\$2,834,739.50	3429d	02-Aug-10 A	19-Oct-23												
W083224442	(S37401) Merrill Ave. Widening	Planned	\$250,855.36	\$0.00	\$250,855.36	52d	31-Aug-22	11-Nov-22												
W083124144	(S38472) Fall Citywide Line Striping Project	Active	\$372,723.01	\$374,312.42	\$374,312.42	113d	27-Sep-10 A	08-Mar-11 A												
W083477776	(S38334) CT 08-168304 Route 90 HMA Structural Concrete	Active	\$808,675.00	\$0.00	\$808,675.00	160d	31-Aug-22	12-Apr-23												
W083031010	(S37404) Riverside Ave. - Central Reconstruction	Planned	\$1,405,407.64	\$442,245.43	\$1,400,896.72	3429d	02-Aug-10 A	19-Oct-23												
Renovation	CITY BUILDING RENOVATIONS	Active	\$14,173,341.90	\$1,536,981.67	\$20,190,843.47	4034d	01-Sep-10 A	17-Mar-26												
W085453467	Courthouse Building Expansion	Active	\$550,470.40	\$0.00	\$550,470.40	642d	31-Aug-22	13-Feb-25												
W085234252	County Center Office Building Addition	Active	\$734,195.20	\$212,023.12	\$1,215,513.92	3634d	01-Nov-10 A	01-Nov-24												
W085234564	(S38664) RFP Design-Build Crafton Hills College Instructional B	Active	\$4,095,450.50	\$0.00	\$6,560,048.23	925d	31-Aug-22	17-Mar-26												
W085457478	America's Corporate Park	Planned	\$636,980.80	\$191,767.19	\$635,569.40	3554d	01-Sep-10 A	14-May-24												
W085634533	America's Nursing Home	Active	\$3,605,744.44	\$482,245.34	\$5,113,958.97	3754d	01-Nov-10 A	18-Apr-25												
W085788595	Harbour Pointe Assisted Living Center	Active	\$4,550,500.56	\$650,946.02	\$6,115,282.54	3979d	01-Sep-10 A	31-Dec-25												
Water/Sewer	WATER / WASTEWATER PROJECTS	Active	\$0.00	\$0.00	\$0.00	0d	15-Aug-22													
Maintenance	MAINTENANCE PROJECTS	Active	\$0.00	\$0.00	\$0.00	0d	15-Aug-22													
Electrical/Gas	GAS / ELECTRICAL PROJECTS	Active	\$0.00	\$0.00	\$0.00	0d														
E&C - Bond "A"	Measure "A" Bond Engineering & Constr	Active	\$23,796,429.85	\$3,022,131.03	\$23,959,560.67	4034d	01-Sep-10 A	17-Mar-26												
Transportation "A"	Transportation Road Projects - Measure A	Active	\$0.00	\$0.00	\$0.00	0d														
Water/Sewer "A"	Water/Sewer Projects - Measure A	Active	\$0.00	\$0.00	\$0.00	0d														
Renovation "A"	City Building Renovations - Measure A	Active	\$20,098,951.23	\$1,536,981.67	\$20,190,843.47	4034d	01-Sep-10 A	17-Mar-26												
EC00515-1	County Center Office Building Addition	Active	\$1,162,028.80	\$212,023.12	\$1,215,513.92	3634d	01-Nov-10 A	01-Nov-24												
EC00530-1	Courthouse Building Expansion	Active	\$550,470.40	\$0.00	\$550,470.40	642d	31-Aug-22	13-Feb-25												
EC00501-1	Haltang Corporate Park	Active	\$640,094.40	\$191,767.19	\$635,569.40	3554d	01-Sep-10 A	14-May-24												
EC00610-1	Harbour Pointe Assisted Living Center	Active	\$6,097,581.10	\$650,946.02	\$6,115,282.54	3979d	01-Sep-10 A	31-Dec-25												
EC00620-1	Juniper Nursing Home	Active	\$5,088,728.29	\$482,245.34	\$5,113,958.97	3754d	01-Nov-10 A	18-Apr-25												
EC00630-1	Saratoga Senior Community	Active	\$5,560,048.23	\$0.00	\$6,560,048.23	925d	31-Aug-22	17-Mar-26												
Maintenance "A"	Maintenance Projects - Measure A	Active	\$0.00	\$0.00	\$0.00	0d														
Electrical/Gas "A"	City Energy Services - Measure A	Active	\$3,697,478.62	\$1,485,149.36	\$3,763,117.20	4423d	01-Nov-10 A	31-Dec-22												
Internal	Internal City Management Projects	Active	\$0.00	\$1,299,952.32	\$6,846,476.92	3783d	01-Jul-10 A	29-Jan-25												
In-flight	In-flight Projects	Active	\$0.00	\$1,299,952.32	\$3,998,578.92	3440d	01-Jul-10 A	09-Oct-23												
Pipeline	Proposed Opportunities	Active	\$0.00	\$0.00	\$2,847,898.00	631d	31-Aug-22	29-Jan-25												
Special	Special Program Launches	Active	\$7,825,265.84	\$1,068,847.23	\$7,818,678.75	3506d	02-Aug-10 A	06-Feb-24												
ProdProg1	Product Program 1	Active	\$5,029,078.05	\$816,557.05	\$5,027,072.36	3451d	02-Aug-10 A	21-Nov-23												
ProdProg2	Product Program 2	Active	\$2,796,187.00	\$252,289.38	\$2,791,606.39	3379d	01-Feb-11 A	06-Feb-24												
IT	Information Technology (IT) Projects	Active	\$0.00	\$595,374.22	\$6,118,124.43	3944d	02-Aug-10 A	26-May-25												
LOB 1	County Management	Active	\$0.00	\$514,048.12	\$3,730,604.09	3944d	02-Aug-10 A	26-May-25												
LOB 2	County Software Development	Active	\$0.00	\$71,326.10	\$2,387,520.34	3449d	14-Feb-11 A	27-May-24												

Activity Name	2026												2027												2028												2029												
	A	S	O	N	D	J	F	M	A	M	J	J	A	S	O	N	D	J	F	M	A	M	J	J	A	S	O	N	D	J	F	M	A	M	J	J	A	S	O	N	D	J	F	M	A	M	J	J	A
1																																																	
2																																																	
3																																																	
4																																																	
5																																																	
6																																																	
7																																																	
8																																																	
9																																																	
10																																																	
11																																																	
12																																																	
13																																																	
14																																																	
15																																																	
16																																																	
17																																																	
18																																																	
19																																																	
20																																																	
21																																																	
22																																																	
23																																																	
24																																																	
25																																																	
26																																																	
27																																																	
28																																																	
29																																																	
30																																																	
31																																																	
32																																																	
33																																																	
34																																																	
35																																																	
36																																																	
37																																																	
38																																																	
39																																																	
40																																																	
41																																																	
42																																																	
43																																																	
44																																																	
45																																																	

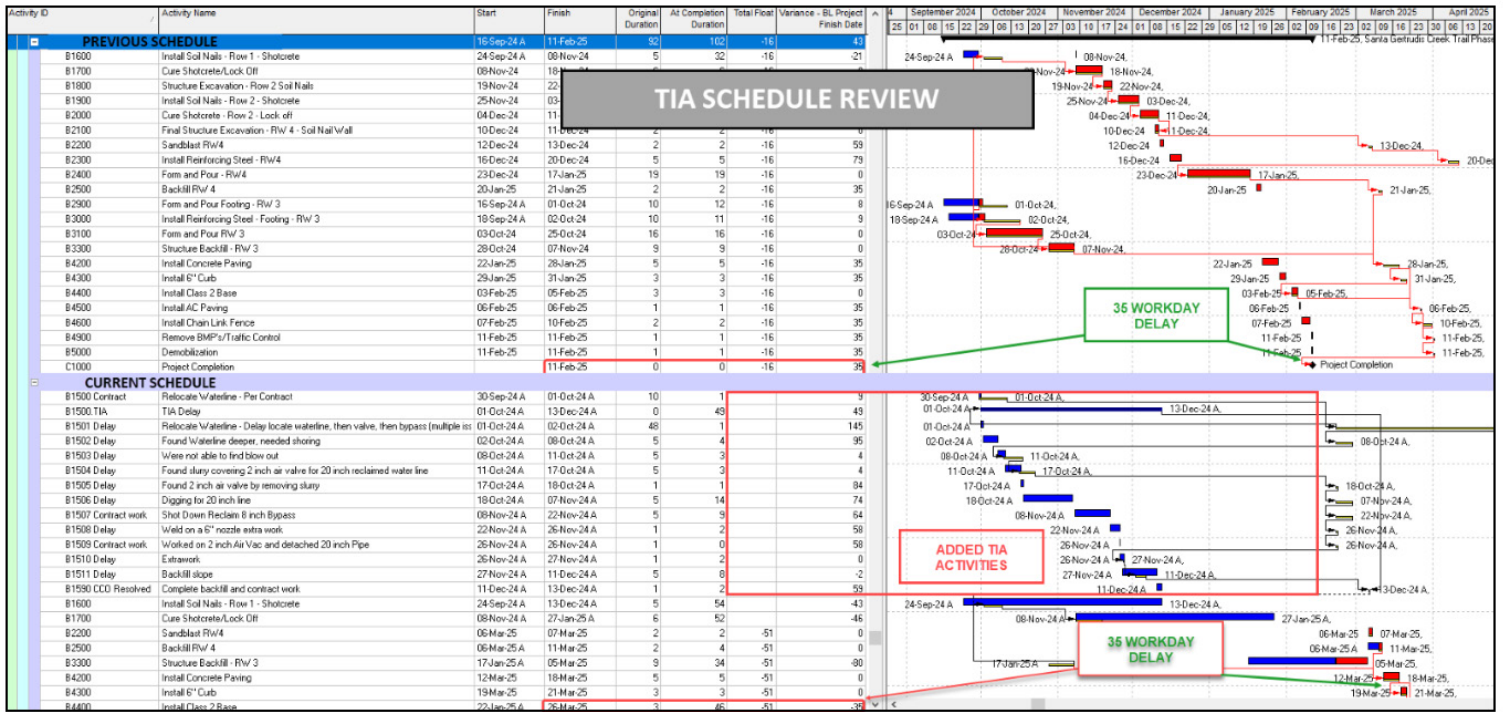
AUTOMATED EARNED VALUE MANAGEMENT

Project ID	Project Name	Total Activities	Actual Cost	Planned Value Cost	Earned Value Cost	Estimate At Completion Cost	Estimate To Complete	Cost Variance	Cost Performance Index	Schedule Performance Index	Schedule Variance	Variance At Completion
PROJECT ID	CMC PROJECT SOLUTIONS	2160	\$7,866,296.80	\$5,819,685.18	\$5,823,258.40	\$29,178,799.62	\$21,312,507.82	(\$2,243,038.40)	0.71	0.97	-0.03	(\$2,209,677.86)
EAC	Engineering & Construction	608	\$1,536,981.67	\$1,422,681.46	\$1,399,483.92	\$14,308,722.85	\$12,772,741.18	(\$1,377,497.75)	0.91	0.98	-0.02	(\$136,380.95)
EC00530	Nesbid Building Expansion	71	\$0.00	\$0.00	\$0.00	\$550,470.40	\$550,470.40	\$0.00	0.00	0.00	0.00	\$0.00
EC00630	Saratoga Senior Community	132	\$0.00	\$0.00	\$0.00	\$4,095,450.50	\$4,095,450.50	\$0.00	0.00	0.00	0.00	\$0.00
EC00515	City Center Office Building Addition	71	\$212,023.12	\$122,360.00	\$113,423.04	\$836,469.43	\$624,446.31	(\$98,600.00)	0.53	0.93	-0.07	(\$102,274.23)
EC00501	Haltong Corporate Park	71	\$191,767.19	\$197,644.25	\$198,277.84	\$628,146.63	\$428,379.44	\$6,510.65	1.03	1.00	0.00	\$16,834.17
EC00620	Juniper Nursing Home	132	\$482,245.34	\$461,639.89	\$457,995.66	\$3,629,809.63	\$3,147,563.69	(\$24,249.68)	0.95	0.99	-0.01	(\$24,064.58)
EC00610	Harbour Pointe Assisted Living Center	131	\$650,946.02	\$641,038.12	\$629,787.38	\$4,577,376.86	\$3,926,430.84	(\$21,158.64)	0.97	0.98	-0.02	(\$26,876.30)
Energy	Energy Services	689	\$1,485,149.36	\$1,354,173.21	\$1,347,097.68	\$3,861,298.91	\$2,376,149.55	(\$1,380,551.68)	0.91	0.99	-0.01	(\$163,820.29)
NRG00870	Baytown, TX - Offshore Maintenance Wo	132	\$0.00	\$0.00	\$0.00	\$128,115.80	\$128,115.80	\$0.00	0.00	0.00	0.00	\$0.00
NRG00940	Sillersville - Refuel Outage	98	\$67,500.00	\$0.00	\$0.00	\$1,161,463.87	\$1,093,963.87	(\$67,500.00)	0.00	0.00	0.00	(\$67,500.00)
NRG00820	Johansston - Routine Maintenance Wo	131	\$0.00	\$0.00	\$0.00	\$75,960.00	\$75,960.00	\$0.00	0.00	0.00	0.00	\$0.00
NRG00800	Sunset Gorge - Routine Maintenance Wo	132	\$97,259.19	\$93,363.34	\$93,363.34	\$97,259.19	\$0.00	(\$3,895.85)	0.96	1.00	0.00	(\$3,895.85)
NRG00950	Red River - Refuel Outage	98	\$391,521.67	\$368,383.45	\$367,318.55	\$1,238,799.58	\$847,267.91	(\$24,203.12)	0.94	0.99	-0.01	(\$10,733.32)
NRG00910	Driftwood - Refuel Outage	98	\$928,868.50	\$891,426.41	\$886,415.79	\$1,158,710.48	\$230,841.98	(\$42,452.71)	0.95	0.99	-0.01	(\$51,691.12)
Manufacturing	Manufacturing	537	\$1,889,992.00	\$1,949,599.30	\$1,803,585.05	\$5,356,718.81	\$3,466,726.01	(\$86,406.95)	0.95	0.93	-0.02	(\$29,747.56)
MFG00189	Waterville - Automated System	45	\$0.00	\$0.00	\$0.00	\$236,388.14	\$236,388.14	\$0.00	0.00	0.00	0.00	\$0.00
MFG00457	Ravine - Plant Expansion & Moderniz	134	\$0.00	\$0.00	\$0.00	\$1,895,524.86	\$1,895,524.86	\$0.00	0.00	0.00	0.00	\$0.00
MFG00659	Deerfield - Automated System	45	\$131,265.00	\$133,390.87	\$128,122.85	\$206,907.20	\$75,642.20	(\$3,142.15)	0.98	0.96	-0.04	(\$3,142.15)
MFG00337	Arcadia - Automated System	45	\$219,312.00	\$218,552.94	\$218,552.94	\$219,312.00	\$0.00	(\$759.06)	1.00	1.00	0.00	(\$759.06)
MFG00772	Cordova - Plant Expansion & Moderniz	134	\$436,490.62	\$441,519.62	\$403,673.55	\$1,293,529.10	\$857,038.49	(\$32,817.07)	0.92	0.91	-0.09	(\$32,246.04)
MFG00925	Melrose - Plant Expansion & Moderniz	134	\$1,102,924.38	\$1,156,136.67	\$1,053,235.71	\$1,505,856.72	\$402,132.33	(\$49,688.67)	0.95	0.91	-0.09	\$5,394.29
ProdDev	Product Development	78	\$1,068,847.23	\$1,084,231.20	\$1,073,091.75	\$3,765,733.31	\$2,696,886.08	\$4,244.53	1.00	0.99	-0.01	\$5,597.68
ProdProg1	Product Program 1	52	\$816,557.85	\$822,119.82	\$816,057.26	\$2,834,954.12	\$2,018,396.26	(\$808,559.95)	1.00	0.99	-0.01	\$1,791.87
PROD00111	Magna Pad Product Test	13	\$0.00	\$0.00	\$0.00	\$808,675.00	\$808,675.00	\$0.00	0.00	0.00	0.00	\$0.00
PROD00752	Zephyr Phase III	13	\$0.00	\$0.00	\$0.00	\$250,855.36	\$250,855.36	\$0.00	0.00	0.00	0.00	\$0.00
PROD00228	Xstar Release II	13	\$374,312.42	\$371,807.98	\$371,807.98	\$374,312.42	\$0.00	(\$2,504.44)	0.99	1.00	0.00	(\$2,504.44)
PROD00914	Project Nano	13	\$442,245.43	\$458,311.84	\$444,249.28	\$1,401,111.34	\$958,865.90	\$2,003.85	1.00	0.99	-0.01	\$4,296.31
ProdProg2	Product Program 2	26	\$252,289.38	\$262,112.19	\$257,034.49	\$910,779.19	\$678,489.82	\$4,745.11	1.02	0.98	-0.02	\$3,805.81
PROD00481	KRS3000 Replacement Project	13	\$0.00	\$0.00	\$0.00	\$463,877.50	\$463,877.50	\$0.00	0.00	0.00	0.00	\$0.00
PROD00414	4G Tablet Project	13	\$252,289.38	\$262,112.19	\$257,034.49	\$466,901.69	\$214,612.32	\$4,745.11	1.02	0.98	-0.02	\$3,805.81
Corporate	Corporate Programs	98	\$1,299,952.32	\$0.00	\$0.00	\$1,299,952.32	\$0.00	(\$1,299,952.32)	0.00	0.00	0.00	(\$1,299,952.32)
IT	Information Technology	150	\$585,374.22	\$0.00	\$0.00	\$585,374.22	\$0.00	(\$585,374.22)	0.00	0.00	0.00	(\$585,374.22)
LOB 1	Line of Business 1	50	\$514,048.12	\$0.00	\$0.00	\$514,048.12	\$0.00	(\$514,048.12)	0.00	0.00	0.00	(\$514,048.12)
LOB 2	Line of Business 2	50	\$71,326.10	\$0.00	\$0.00	\$71,326.10	\$0.00	(\$71,326.10)	0.00	0.00	0.00	(\$71,326.10)

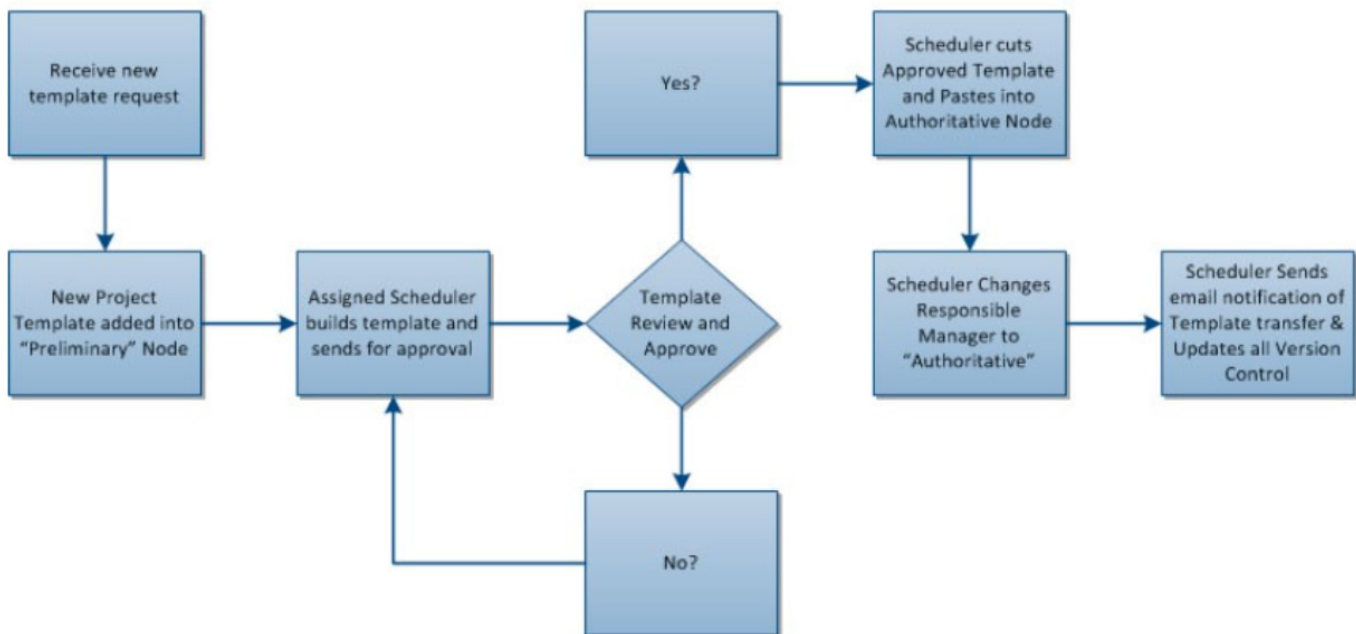
PROJECT FORECAST RESOURCE UNITS

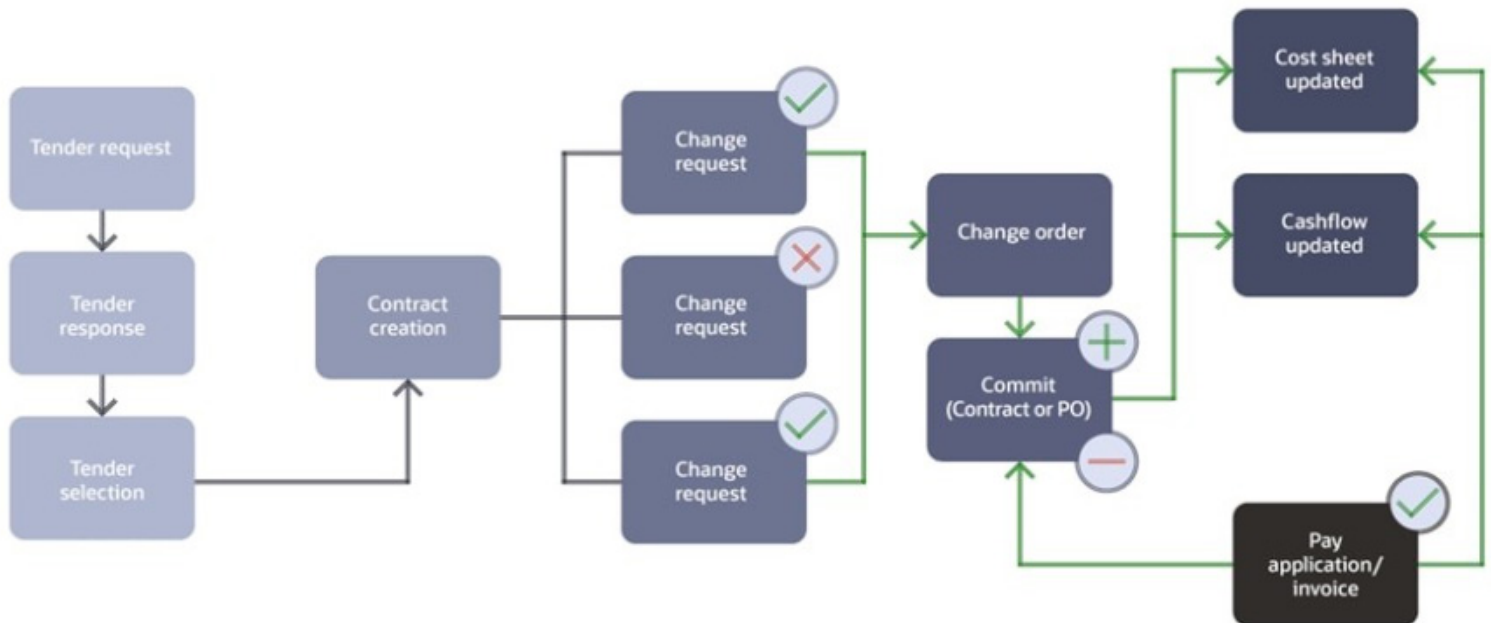
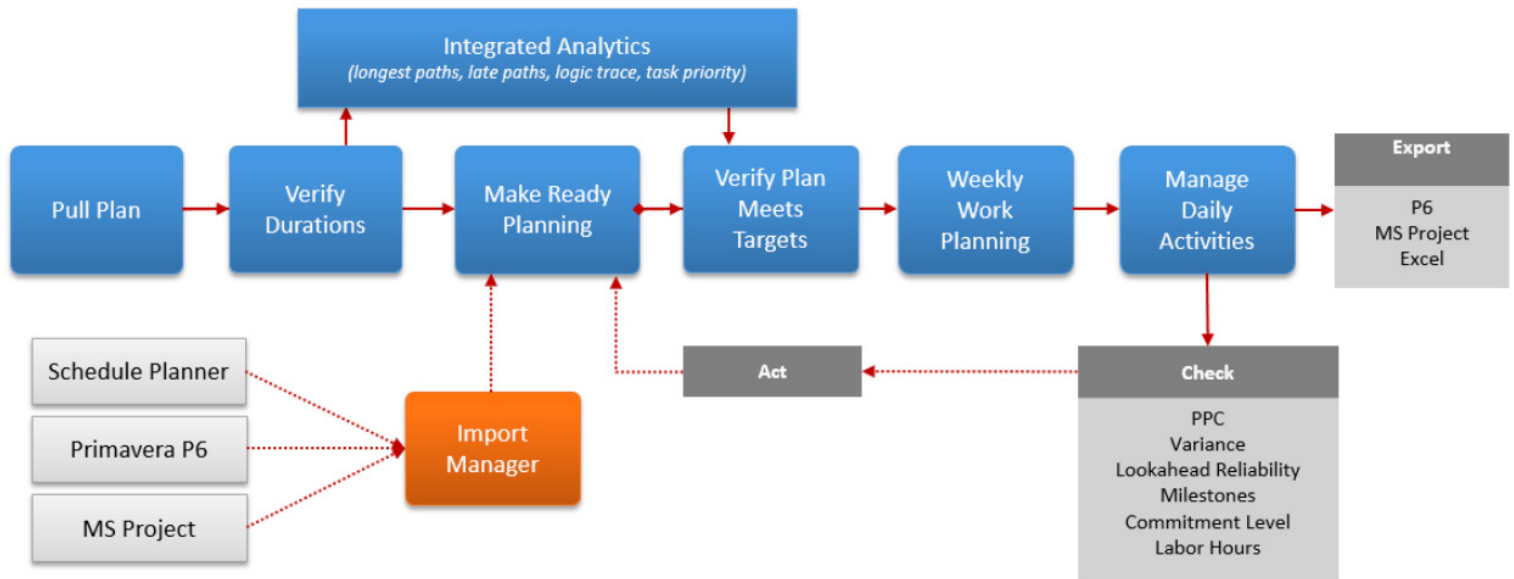


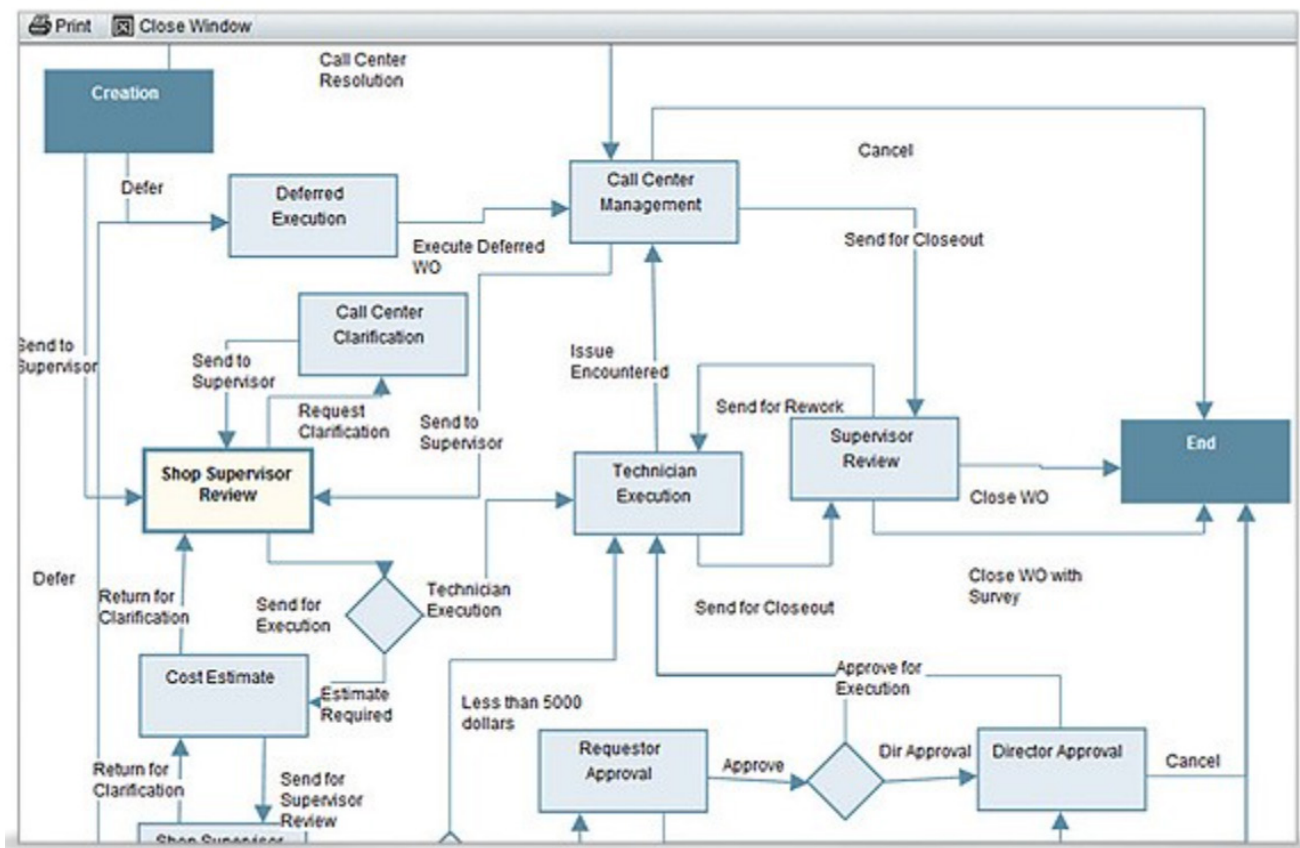
Status	Overall	%	Overall Breakdown	Status	Construction	%	Construction Breakdown
Not Started	16	46%		Not Started	5	50%	
Not Finished	3	9%		Not Finished	2	20%	
Started	1	3%		Started	0	0%	
Finished	15	43%		Finished	3	30%	
Activity Deleted	0	0%		Activity Deleted	0	0%	
Total Activities	0	100%		Total Activities	10	100%	
Status	Critical	%	Near Critical Breakdown	Status	Crit. Con.	%	Construction Near Critical Breakdown
Not Started	5	33%		Not Started	5	50%	
Not Finished	2	13%		Not Finished	2	20%	
Started	0	0%		Started	0	0%	
Finished	8	53%		Finished	2	20%	
Activity Deleted	0	0%		Activity Deleted	0	0%	
Total Activities	15	100%		Total Activities	9	90%	



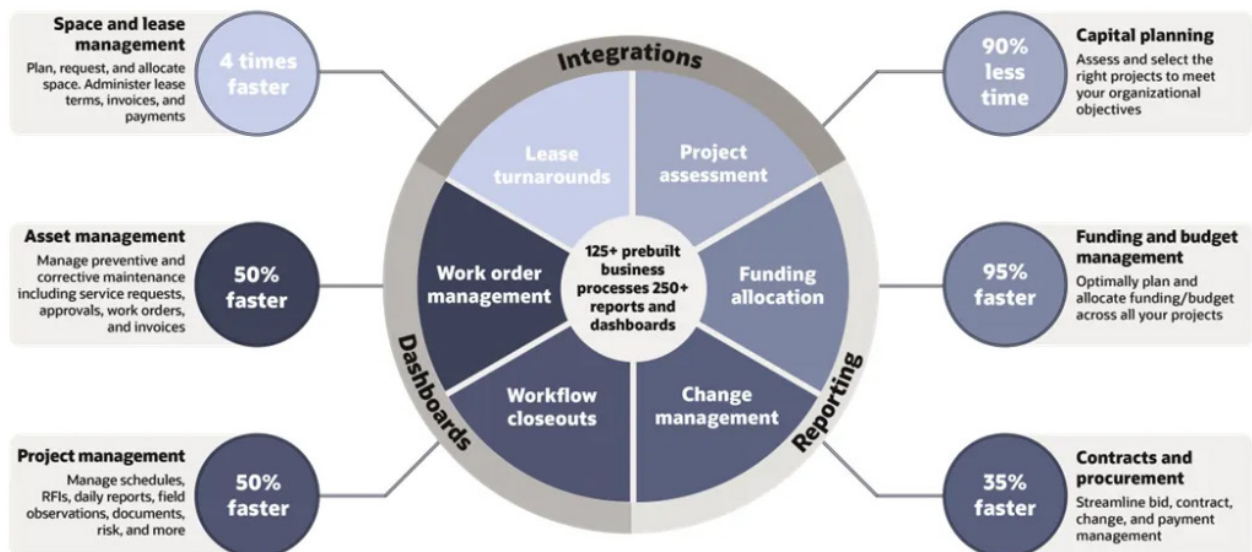
Document Control Workflow / System Interface Examples







Primavera Unifier with the Unifier Accelerator base configuration





Safety is Our Priority

At CMC Project Solutions, safety is paramount. It's a core value integrated into every Primavera P6 schedule, every project plan, and every construction management activity we undertake.

We are committed to the well-being of our team, clients, and partners. Safety isn't an add-on; it's foundational to successful project delivery.

Our Approach:

- **Proactive Integration:** Safety planning starts day one, embedded in scheduling and risk assessment.
- **Rigorous Standards:** We meet or exceed all safety regulations through strict policies and continuous training.
- **Empowered Culture:** Every individual is accountable, with the authority to stop unsafe work.

Safety drives our operational excellence, ensuring projects are not only on schedule and budget but also incident-free.

Leveraging Technology for Efficiency and Insight

At CMC Project Solutions, we don't just use technology; we strategically leverage best-in-class platforms to unlock efficiency, provide deep insights, and deliver superior value on every project.

As an **Oracle Partner and Reseller**, our command of leading-edge tools, particularly the Oracle Primavera suite, ensures precision in planning, clarity in execution, and powerful analytics for informed decision-making, giving our clients a distinct advantage.

Core Platforms: Robust Project Control

Our foundation rests on industry-standard, powerful project management and control platforms. Our status as an Oracle Partner and Reseller provides us with deep expertise and direct access to the latest developments in Oracle's project management solutions:

The logo for Oracle Primavera P6 EPPM. It features a red rectangular box with the word "ORACLE" in white, uppercase letters. Below this box is a light gray rectangular box with the text "Primavera P6 EPPM" in dark gray, uppercase letters. To the left of the red box is a vertical bar with orange and blue segments.

ORACLE

Primavera P6 EPPM

The global benchmark for project scheduling and portfolio management. We utilize P6 EPPM for complex project planning, resource loading, critical path analysis, and enterprise-wide visibility, ensuring schedules are realistic, optimized, and tightly controlled.

The logo for Oracle Primavera Unifier. It features a red rectangular box with the word "ORACLE" in white, uppercase letters. Below this box is a light gray rectangular box with the text "Primavera Unifier" in dark gray, uppercase letters. To the left of the red box is a vertical bar with orange and blue segments.

ORACLE

Primavera Unifier

A comprehensive project controls solution. We deploy Unifier for robust cost management, change management, document control, and risk management, providing integrated control over all project facets from inception to closeout.

The logo for Oracle Primavera Cloud (OPC). It features a red rectangular box with the word "ORACLE" in white, uppercase letters. Below this box is a light gray rectangular box with the text "Primavera Cloud (OPC)" in dark gray, uppercase letters. To the left of the red box is a vertical bar with orange and blue segments.

ORACLE

Primavera Cloud
(OPC)

Oracle's cutting-edge, cloud-based platform for enterprise project portfolio management. We leverage OPC for its advanced capabilities in schedule, cost, and risk management, facilitating enhanced collaboration, real-time data access, and powerful reporting across complex portfolios and projects.

Advanced Analytics: Transforming Data into Insight

We turn complex project data into clear, actionable intelligence using powerful analytics tools:



Power BI

A leading interactive data visualization and business intelligence tool. We create custom dashboards and reports in Power BI, drawing data from Primavera and other sources to provide clients with real-time, intuitive insights into project performance, trends, and forecasts.



Part of the Oracle Primavera suite, designed for in-depth analysis of schedule and cost data. We use Primavera Analytics to uncover performance trends, identify potential issues early, and provide detailed historical analysis to refine future project strategies.

Specialized Tools: Enhancing Specific Capabilities

We enhance our core services with specialized technologies for critical project functions:



ArcGIS

The world's premier GIS mapping and spatial analytics software. We integrate location intelligence into project planning and execution, using ArcGIS for site analysis, logistics planning, environmental impact visualization, and mapping project progress in a geographical context.



An advanced capital project estimating software. We leverage InEight Estimating for detailed, accurate, and defensible cost estimates, integrating seamlessly with project scope and schedule to provide reliable cost control from the outset.



SYNCHRO™

A powerful 4D/5D BIM construction modeling platform. We use Synchro to link 3D models with the project schedule (4D) and cost (5D), creating dynamic visualizations that enhance planning, identify spatial conflicts over time, improve communication, and provide visual progress tracking.

Commitment to Best-in-Class

Our continuous investment in and mastery of these best-in-class technologies, reinforced by our strategic partnerships like our Oracle Partner and Reseller status, underscore our commitment to delivering the highest level of service and strategic advantage to our clients in the complex world of project and construction management.

Our Collaborative & Results-Oriented Approach

At CMC Project Solutions, we believe that the most successful projects are built on a foundation of strong collaboration and a relentless focus on delivering tangible results. Our approach is centered on forging genuine partnerships with our clients, seamlessly integrating with their teams, maintaining transparent communication, and consistently providing practical solutions that yield measurable outcomes.

Building True Partnerships with Our Clients

We see our clients not just as customers, but as valued partners. From the outset, we invest time in understanding your unique vision, objectives, and challenges. This deep understanding allows us to align our strategies and efforts with your specific needs, ensuring that our definition of project success is directly aligned with yours. We foster relationships built on trust, mutual respect, and a shared commitment to achieving common goals. Your success is our success, and we work collaboratively with you every step of the way.

Seamless Integration with Your Project Team

We pride ourselves on our ability to integrate smoothly and effectively with your existing internal teams and stakeholders. We become an extension of your organization, working in harmony with your personnel and processes. Our team members are adept at adapting to different organizational cultures and project environments, ensuring a cohesive and efficient working relationship. We believe that open communication and a collaborative spirit among all team members, both yours and ours, are crucial for navigating complexities and driving project momentum.

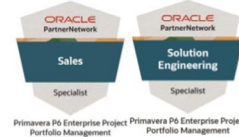
Clear Communication and Transparent Reporting

Clear, consistent, and transparent communication is fundamental to our approach. We establish open lines of communication from the start and maintain a regular cadence of updates and discussions. Our reporting is designed to be transparent, providing you with a clear and accurate view of project progress, potential risks, and mitigation strategies. We utilize [Mention a type of reporting tool or method if applicable, e.g., regular status meetings, detailed reports] to ensure you are always informed and empowered to make timely decisions. We believe that no one should be surprised, and we are committed to proactive communication to address any issues promptly and effectively.

Focus on Delivering Practical Solutions & Measurable Results

Our ultimate goal is to deliver practical, effective solutions that produce measurable and sustainable results for your organization. We don't just manage processes; we focus on achieving the outcomes that matter most to your business. Our team is skilled at identifying challenges, developing innovative yet practical solutions, and executing strategies that deliver tangible value. We define key performance indicators (KPIs) collaboratively with you at the beginning of each project to ensure that we are focused on achieving quantifiable results that contribute to your strategic objectives. We are committed to accountability and to demonstrating the positive impact of our work.

Professional Affiliations and Thought Leadership



DBE: 20930397
WBE: 20000205

Let's Discuss Your Project Needs



Zoe Rodecker – Chief
Operating Officer
ZRodecker@CMCProj.com



Brenda Campbell – Chief
Marketing Manager
BCampbell@CMCProj.com



+1 877- 778- 2337
www.cmcprojectsolutions.com



Appendix

NAICS CODES:	
NAICS 541611	Administrative Management and General
NAICS 518210	Computing Infrastructure Providers, Data Processing,
NAICS 541618	Other Management Consulting Services (More)
NAICS 611420	Computer Training (More)
NAICS 611430	Professional and Management Development Training (More)
NAICS 541512	Computer Systems Design Services (More)
NAICS 541513	Computer Facilities Management Services (More)
NAICS 541519	Other Computer Related Service
SIC CODES:	
8742	Management Consulting Services
7379	Computer Related Services, Not Elsewhere Classified
7373	Computer Integrated Systems Design
8748	Business Consulting Services, Not Elsewhere Classified